

1



2

March 26, 2024



Yes, **Sears** has everything
 ..and everything is so easy to buy
 when you have a Sears Credit Card

3

17-ft. fiber glass Runabouts with rugged double-bottomed hulls
 Utility . . . 2 vinyl-covered back-to-back seats
Save \$125 Reg. \$1845

Cabin Cruiser . . . two 6 1/2-ft. berths . . . simulated carpeting
Save \$180 Reg. \$2650

Spook . . .
 10-foot fiber glass canoe. This salty 2-hp motor takes up to 295.00

17-ft. Aluminum Canoe
 Light, maneuverable and rugged give this canoe plenty of room for fun. No motor needed. Carry over 17 items in own weight. Light enough for one man to portage with . . . weighs only 84 lbs. Rugged construction with lead, bottom and all stress points reinforced. Fiberglass hull. No rot, rust or corrosion. 100 sq. ft. deck. 17 ft. beam. 58 1/2 inches. 1107878—Ship. wt. 66 lbs. \$16 monthly. . . . Cash \$225.00

Whirlwind . . . 14-ft. fiber glass Sportster
 . . . 95 sq. ft. cantilever sail gives quick response
\$469.00 \$23.00 monthly

15 1/2-ft. fiber glass Canoe
 The quick response and delicate handling ability an expert seaman knows your car . . . weighs only 84 lbs. Rugged construction with lead, bottom and all stress points reinforced. Fiberglass hull. No rot, rust or corrosion. 100 sq. ft. deck. 17 ft. beam. 58 1/2 inches. 1107878—Ship. wt. 66 lbs. \$16 monthly. . . . Cash \$225.00

4

Here is the sturdiest, most rigidly braced Gym Set we've ever sold. Stronger double-bar top spreads the 6 legs farther apart to give the 2 1/2-inch frame more stability than any other gym set... so sturdy it easily supports all popular rides—plus a fun-filled tree house

*Sears * Best*

Yes, **Sears** has everything...and everything is so easy to buy when you have a Sears Credit Card

With tree house
\$69⁹⁵

Level-spraying guide-ride with fixed tracks

2 swings with 1000-lb. test chains, firm plastic seats

*Sears * Best*

A Sensational New Development
PERMA-PREST NO-IRON SHEETS

Bring you the luxury of laundry smoothness every night—stay wrinkle-free their entire life.

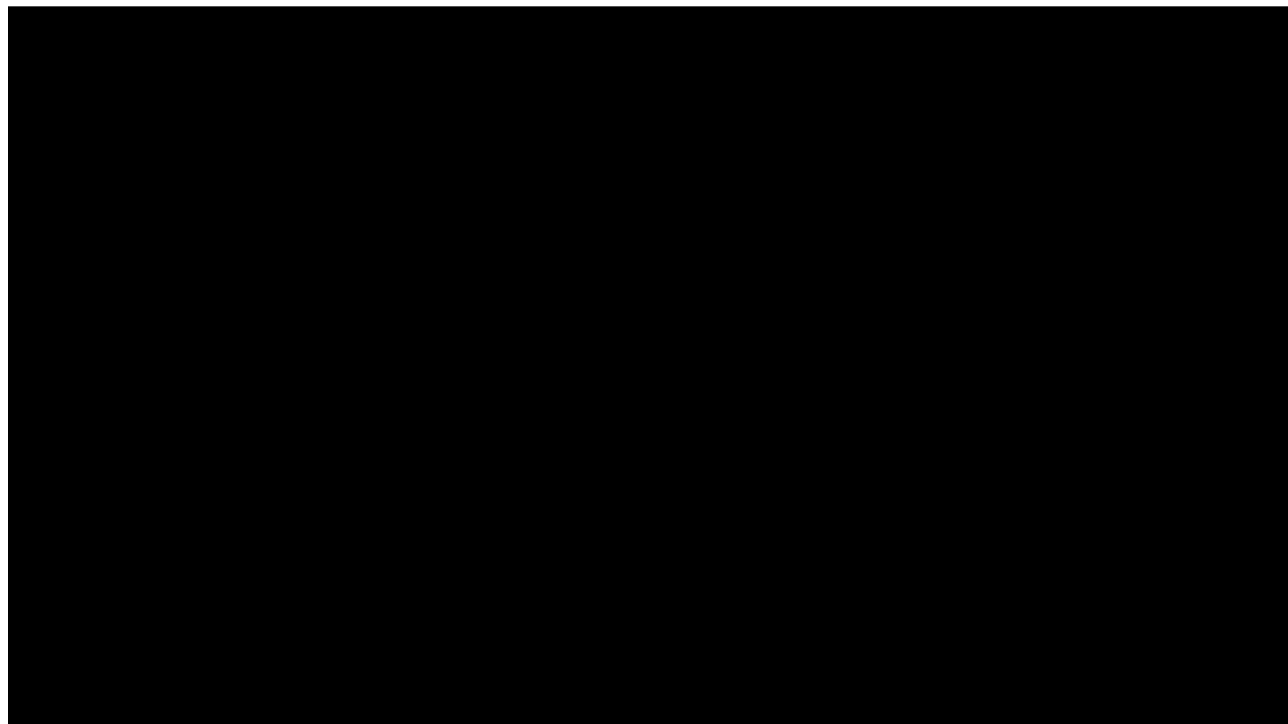
All you do is machine wash in hot water then tumble dry them. More, this blend of 50% Fortrel® polyester, 50% combed cotton wears even longer than 100% combed cotton percale. They won't shrink over 2% either—both flat and fitted styles are preshrunk.

Yes, **Sears** has everything...and everything is so easy to buy when you have a Sears Credit Card

Available in white only **\$3⁷⁷** Twin flat or fitted

Flat Sheets... 2-inch hems at each end mean more even wear.

5



6



7



8



9



10



11



12

Jeff Bezos

Former CEO of Amazon

“The only thing that’s disruptive is customer adoption. If you can invent a better way, and if customers agree that it’s a better way, then they will use that.”



13

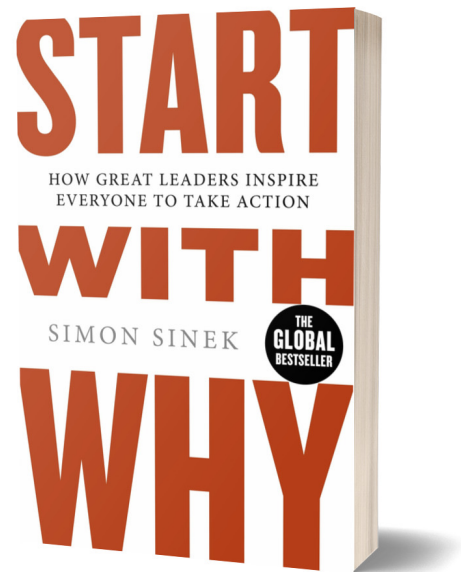
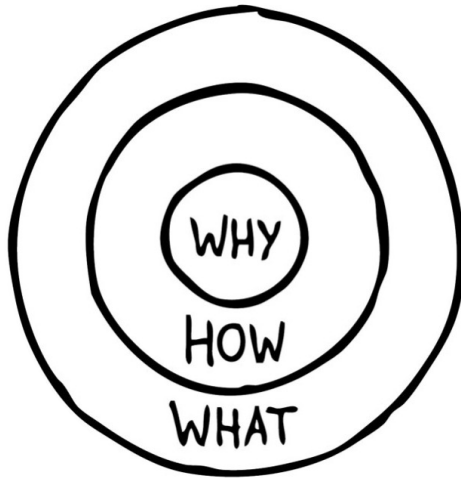
A LEADER'S CHALLENGES

WHO
YOU
ARE

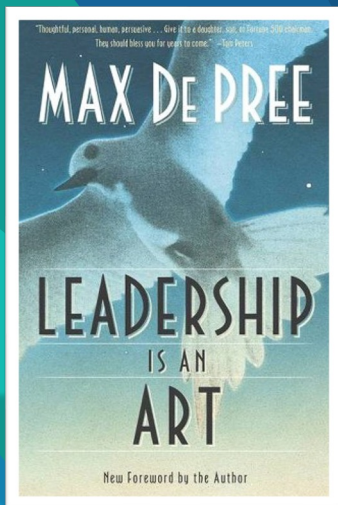
WHAT
YOU
WANT TO
BECOME

14

Start With Why



15



“The first responsibility of a leader is to **define reality**. The last is to **say thank you**. In between the two, the leader must **become a servant**.”

— Max De Pree
Leadership is an Art

16

The image shows the cover of the book "Leading Change" by John P. Kotter. The cover features a penguin and a starburst that says "The International Bestseller, with a New Preface by the Author". To the right is a circular diagram with "THE BIG OPPORTUNITY" in the center, surrounded by eight overlapping circles, each containing a step of the change model:

- INSTITUTE CHANGE
- CREATE A SENSE OF URGENCY
- BUILD A GUIDING COALITION
- FORM A STRATEGIC VISION & INITIATIVES
- ENLIST A VOLUNTEER ARMY
- ENABLE ACTION BY REMOVING BARRIERS
- GENERATE SHORT-TERM WINS
- SUSTAIN ACCELERATION

17

A large blue question mark icon is centered at the top. Below it, the text "How do you **define** Leadership?" is displayed in a blue, sans-serif font. The entire content is framed by a decorative border with geometric blue and teal patterns.

18

...

Leadership is the art of
shepherding a team
towards a better future.

19

 Advent Health

VISION 2030

Driven by our mission of providing wholistic care to all people, AdventHealth will be known for our preeminent, faith-based, consumer-focused clinical care.

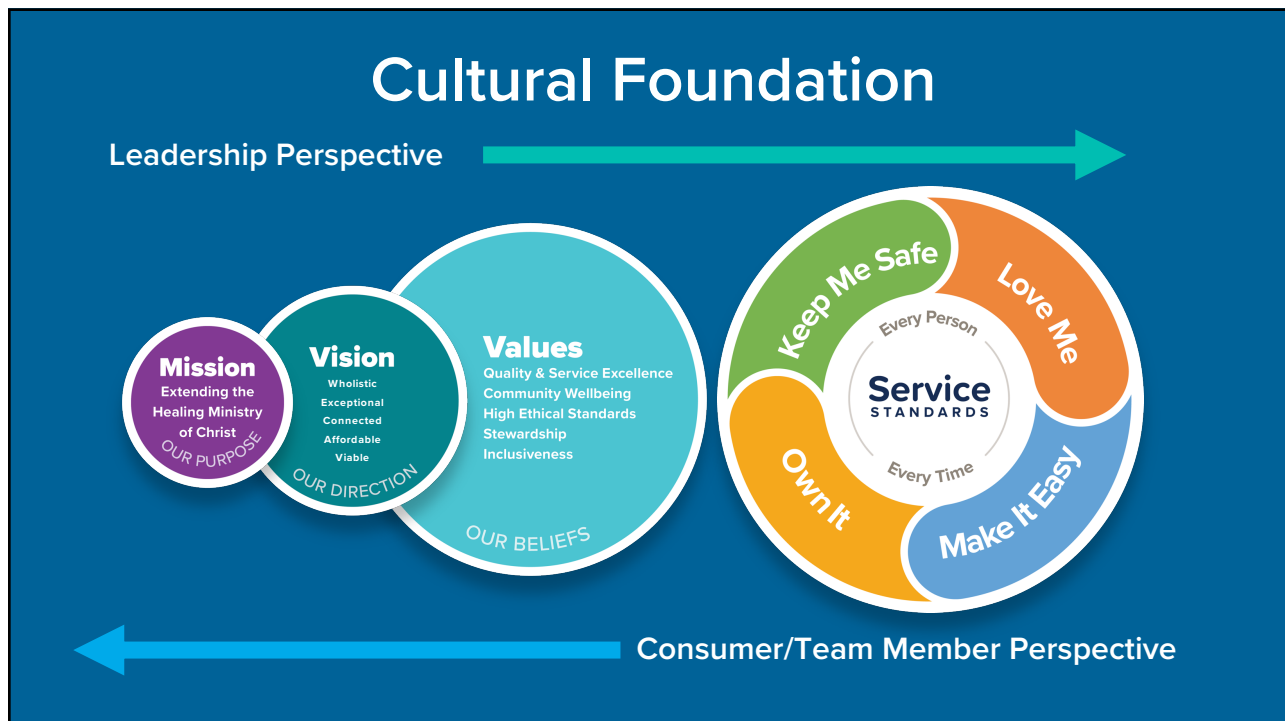


 Advent Health

20



21



22



What is the difference
between **Leadership** and
Management?

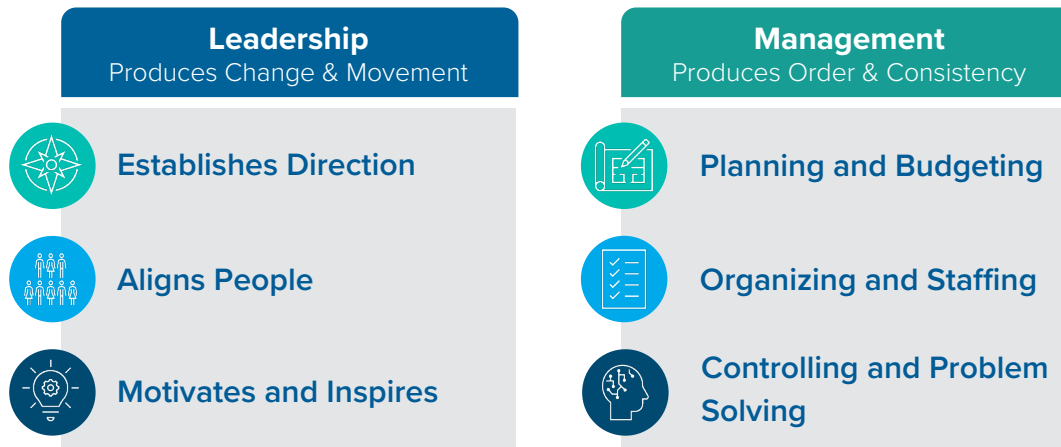
23



Management is coordinating
people, processes, and
resources toward predictable
outcomes.

24

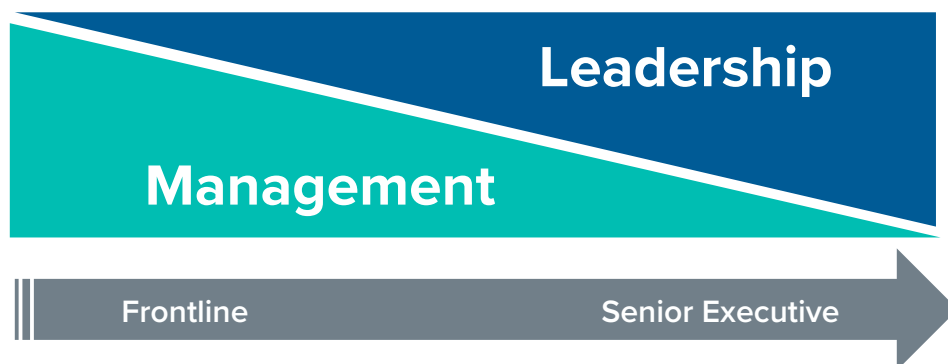
Leadership vs. Management



25

Management and Leadership

Depending on the organizational role, individuals will adjust to the levels of both management and leadership they leverage.



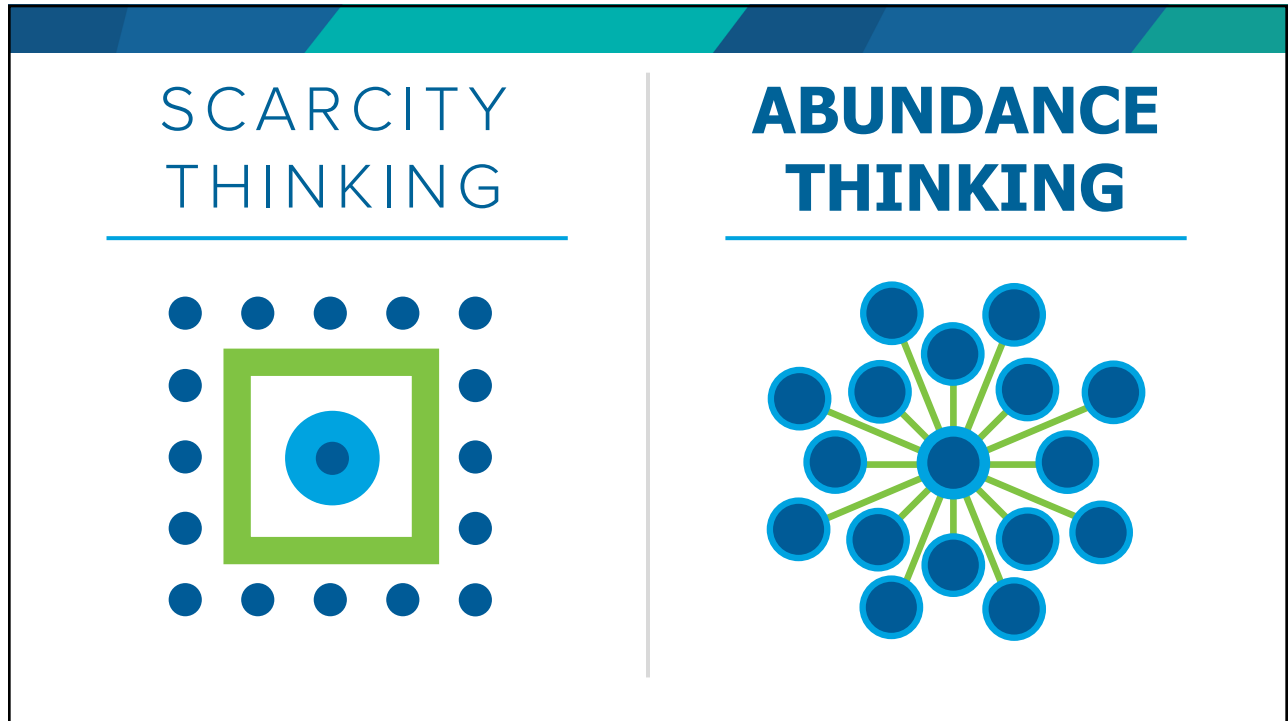
26



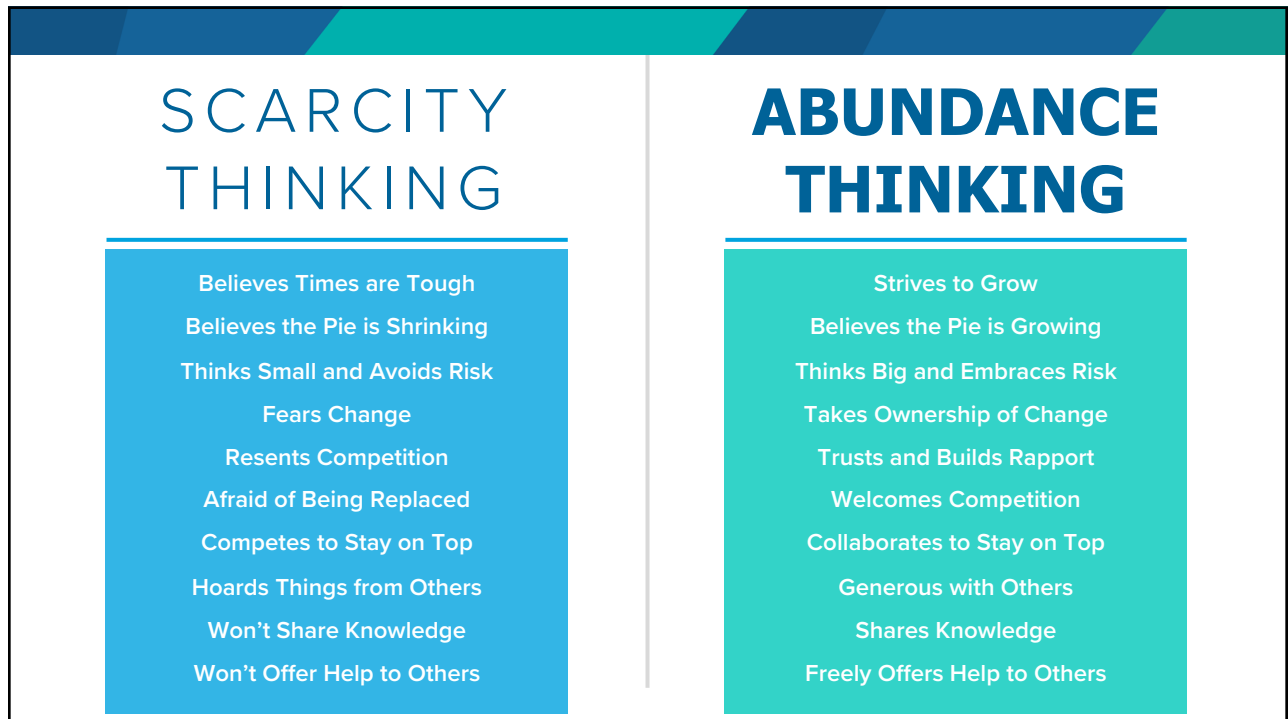
27



28



29



30

A LEADER'S CHALLENGES

WHO
YOU
ARE

WHAT
YOU
WANT TO
BECOME

31

Serenity Prayer

God grant me the serenity
to accept the things I cannot change;
courage to change the things I can;
and wisdom to know the difference.
Amen.



32



Extending the Healing Ministry of Christ