

Seminar speakers



Yamileth Bazan, PhD



JoJean Birth, BBA,
CPA



Robert Burrow



Anna Gabriella Colon,
JD



Lowell C. Cooper



Brian Danese



Judy R. Glass



Ann Gibson, PhD
CPA



Elaine Hagele



Mark Hyder, JD, MS, CPA



Troy S. Levy, DMin



Don Livesay, MDiv



Tom Melzoni, PhD



Robert Overstreet,
PhD



Michael Park



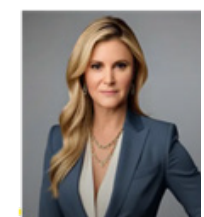
Glynn Scott



Phil Wilhelm



James Winegardner



Tyler Cohen Wood

We thank the following sponsors:



Seventh-day
Adventist[®] Church

NORTH AMERICAN DIVISION



EMPOWER
RETIREMENT™



STEWARDSHIP

Seventh-day Adventist[®] Church
NORTH AMERICAN DIVISION



GCAS
General Conference
Auditing Service
Delivering Excellence



Adventist Risk
Management[®] Inc.



Maner
Costerisan
Certified Public Accountants
Business & Technology Advisors



NATIONAL REGISTRY OF
CPE
SPONSORS

Southern Adventist University's Institute of Ethical Leadership is registered with the National Association of State Boards of Accountancy (NASBA), as a sponsor of continuing professional education on the National Registry of CPE Sponsors. State boards of accountancy have final authority on the acceptance of individual courses for CPE credit. Complaints regarding registered sponsors may be addressed to the National Registry of CPE Sponsors, 150 Fourth Avenue North, Suite 700, Nashville, TN, 37219-2417. Web site: www.nasba.org

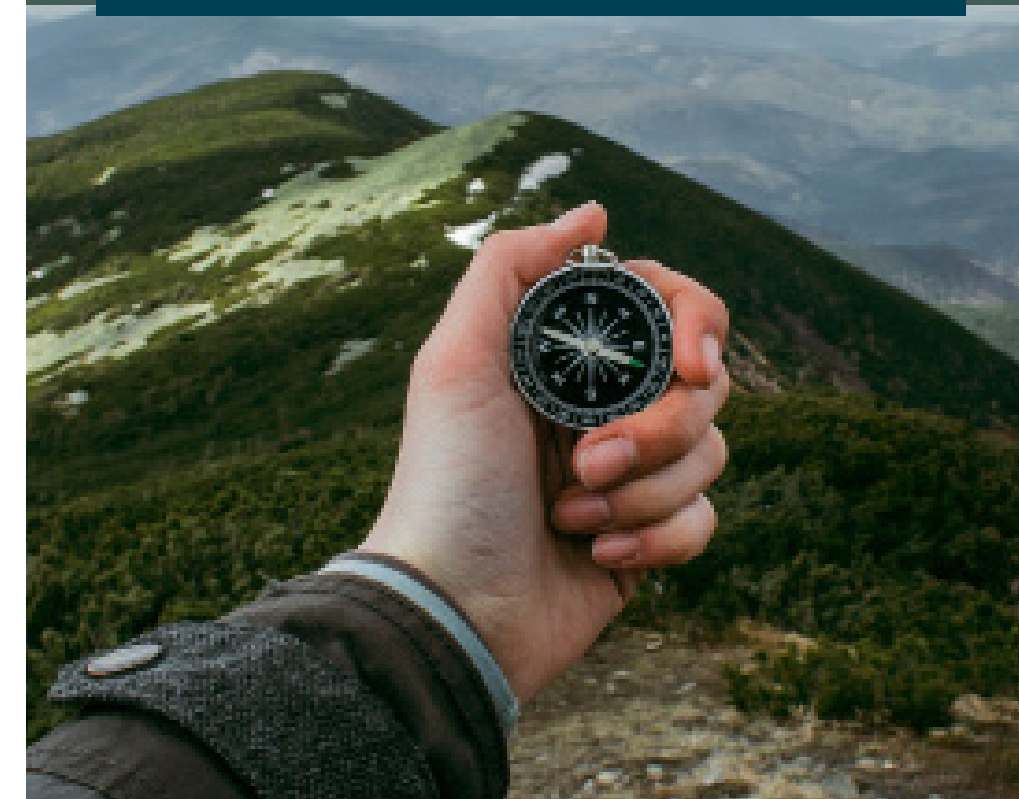
BEYOND

THE BOTTOM LINE 2026

Professional Growth Seminar
for Church Business Leaders

CULTIVATING TALENT AND
NURTURING MISSION

MARCH 22-24, 2026



PRESENTED BY THE
North American Division
of Seventh-day Adventists

AND THE
[Institute of Ethical Leadership](http://InstituteofEthicalLeadership)
School of Business
SouthernAdventistUniversity



SOUTHERN
ADVENTIST UNIVERSITY

VENUE

Rosen Plaza Hotel
9700 International Drive
Orlando, Florida 32819

Welcome to the Beyond the Bottom Line Conference.

Beyond the Bottom Line strives to deliver outstanding, relevant continuing education to those charged with the financial leadership of our Church.

This is the fifth conference that Southern Adventist University's Institute of Ethical Leadership has organized in partnership with the North American Division. We are grateful to its founders, Ann Gibson and Gary Dodge.

We hope you will find that the quality and relevance of this conference lives up to the standards set for us by the founding members who are still active in guiding the direction of this program. We wish you a wonderful and valuable experience.



Keynote speaker:

Jennifer Pharr Davis — Jennifer Pharr Davis is a National Geographic Adventurer of the Year, award-winning author, and entrepreneur, often called “the Serena Williams of long-distance hiking” (PBS). A record-setting endurance hiker, environmental advocate, and former member of the President’s Council on Sports, Fitness, and Nutrition, she inspires audiences with powerful lessons on resilience, leadership, and perseverance.



Closing speaker:

Vera Jones — Vera Jones is a motivational speaker, author, and leadership coach known as “The Empathy Coach.” A Syracuse University Hall of Fame scholar-athlete with a master’s degree from the Newhouse School, she is a former ESPN and Big Ten Network basketball analyst, Division I coach, and current adjunct public speaking professor at the University of North Florida. Founder of the Perseverance Speakers Academy, Jones inspires audiences through empathy-driven leadership, communication, and resilience.



Featured plenary speaker:

David Banks — David Banks is president and CEO of AdventHealth, a national faith-based connected network of care guided by its mission to extend the healing ministry of Christ and brand promise to help those we serve feel whole. Banks has spent more than three decades at AdventHealth, helping shape its Vision 2030 strategic plan, and leading in executive roles across multiple divisions and facilities.



Tim Lupinacci, JD - Tim Lupinacci is the CEO of Baker Donelson, one of America’s top 100 law firms, and the author of Everybody Leads. A passionate advocate for accessible leadership, he founded the Everybody Leads initiative to help individuals from underserved communities develop leadership skills and create lasting opportunity.

SESSION	TIME	PROGRAM	SPEAKER	LOCATION
SUNDAY, MARCH 22				
Registration	3:00 – 5:00 p.m.	Registration/AASI User Group Advanced Feature*	Michael Park	Salon 9/10
Banquet	6:00 – 7:45 p.m.	Opening Keynote	Jennifer Pharr Davis	Ballroom B
MONDAY, MARCH 23				
Devotional	8:00 – 9:00 a.m.	Morning Devotion	Yamileth Bazan	Ballroom B
15 Minute Break				
Plenary	9:15 – 10:15 a.m.	Plenary - “Everybody Leads”**^	Tim Lupinacci	Ballroom B
15 Minute Break				
Seminars	10:30 – 11:30 a.m.	Seminar Options (choose one)		
		1A: Tax Update*^	Anna Gabriella Colon	Salon 13
		1B: Growing Modern Academies*^	Phil Wilhelm	Salon 7
		1C: Chairing and Meeting*^	Lowell Cooper	Ballroom A
		1D: NAD Accounting Manual*^	Ann Gibson/Elaine Hagele	Salon 9/10
15 Minute Break				
Luncheon	11:45 a.m. – 1:45 p.m.	Plenary - “Professional Grade”	James Winegardner	Ballroom C/D
15 Minute Break				
Seminars	2:00 – 3:00 p.m.	Seminar Options (choose one)		
		1E: Tax Update*^	Anna Gabriella Colon	Salon 13
		1F: Growing Modern Academies*^	Phil Wilhelm	Salons 7
		1G: NAD Accounting Manual*^	Ann Gibson/Elaine Hagele	Salon 9/10
		1H: AASI User Group - Advanced Feature*	Michael Park	Ballroom A
15 Minute Break				
Plenary	3:15 - 4:15 p.m.	Plenary - “Cybersecurity and AI”**^	Tyler Cohen Wood	Ballroom B
15 Minute Break				
Plenary	4:30 - 5:30 p.m.	Plenary - “Ethics”**^	Mark Hyder	Ballroom B
TUESDAY, MARCH 24				
Devotional	8:00 - 9:00 a.m.	Morning Devotion	Yamileth Bazan	Ballroom B
15 Minute Break				
Plenary	9:15 - 10:15 a.m.	Plenary - Motivated By Mission - Building Culture*	David Banks	Ballroom B
15 Minute Break				
		2A: CEO/Treasurer Panel Discussion*^	Livesay/Scott/Danese	Salon 7
		2B: From Good Intentions to Greater Impact^	Tom Melzoni	Salon 9/10
		2C: Attracting Younger Generations to Stewardship^	Troy S. Levy	Ballroom A
		2D: ASCEND: A Leadership Framework for Emotional Intellegince*	Robert Overstreet	Salon 13
15 Minute Break				
Luncheon	11:45 a.m. - 1:45 p.m.	Plenary -	Judy Glass	Ballroom C/D
15 Minute Break				
Seminars	2:00 - 3:00 p.m.	Seminar Options (choose one)		
		2E: Blueprint for Financial Freedom^	Troy S. Levy	Ballroom A
		2F: Horizons of Stewardship^	Tom Melzoni	Salon 9/10
		2G: Red Flags*	JoJean Birth	Salon 11
		2H:ASCEND: A Leadership Framework for Emotional Intellegince*	Robert Overstreet	Salon 13
		2I: The Legal Relationship of Supporting Ministries*	Robert Burrow	Salon 12
15 Minute Break				
Closing Keynote	3:15 p.m. - 4:15 p.m.	Plenary - Leadership and Empathy**^	Vera Jones	Ballroom B
Farewell	4:30 p.m. – 5:30 p.m.	Plenary - Leadership and Empathy**^	Vera Jones	Ballroom B

* Qualifies for NASBA CPE Credit

^ Qualifies for Trust Certificate CPE